

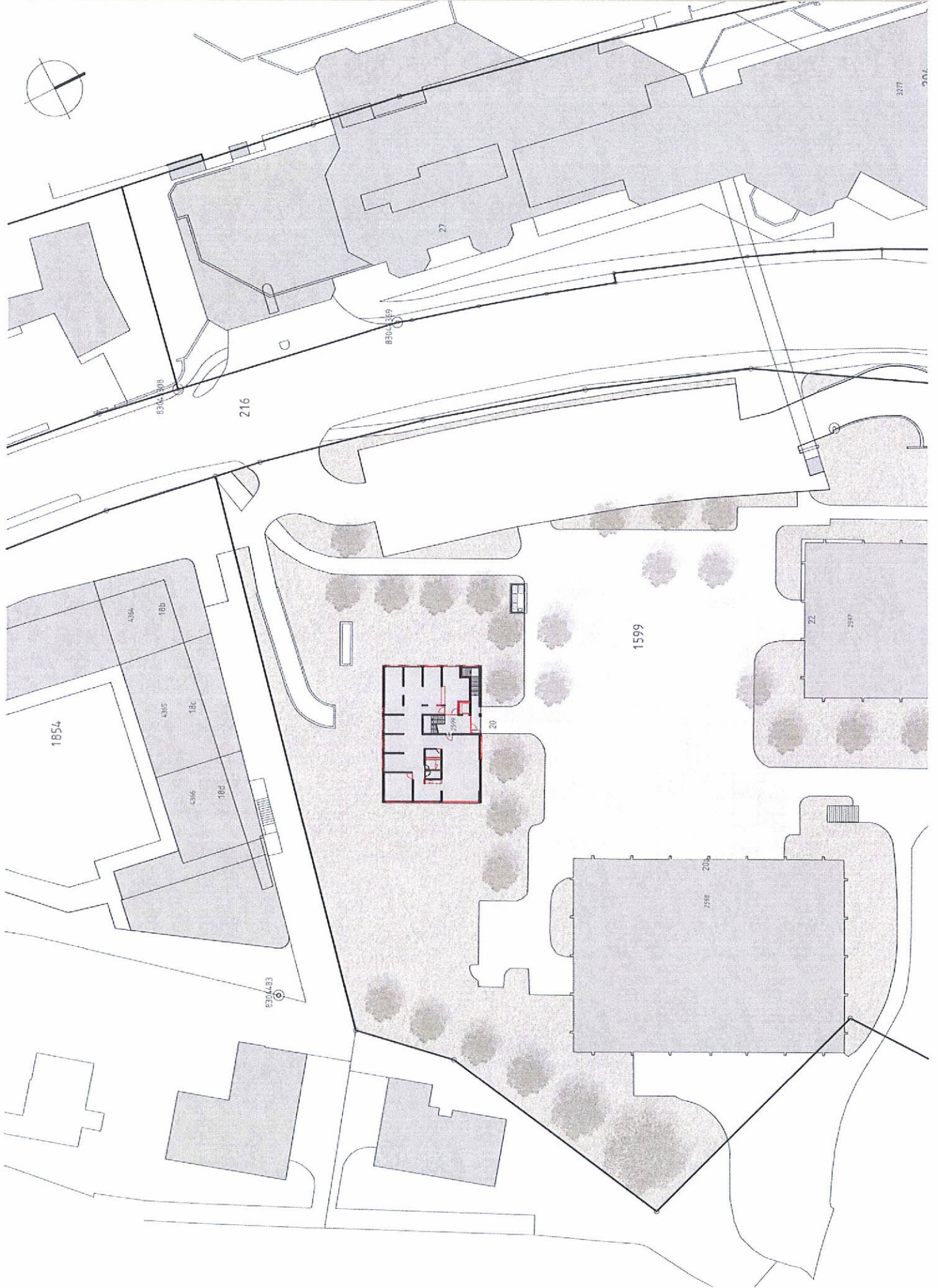


Plandossier Vorprojekt

Ort, Datum: Emmen, 20.05.2015

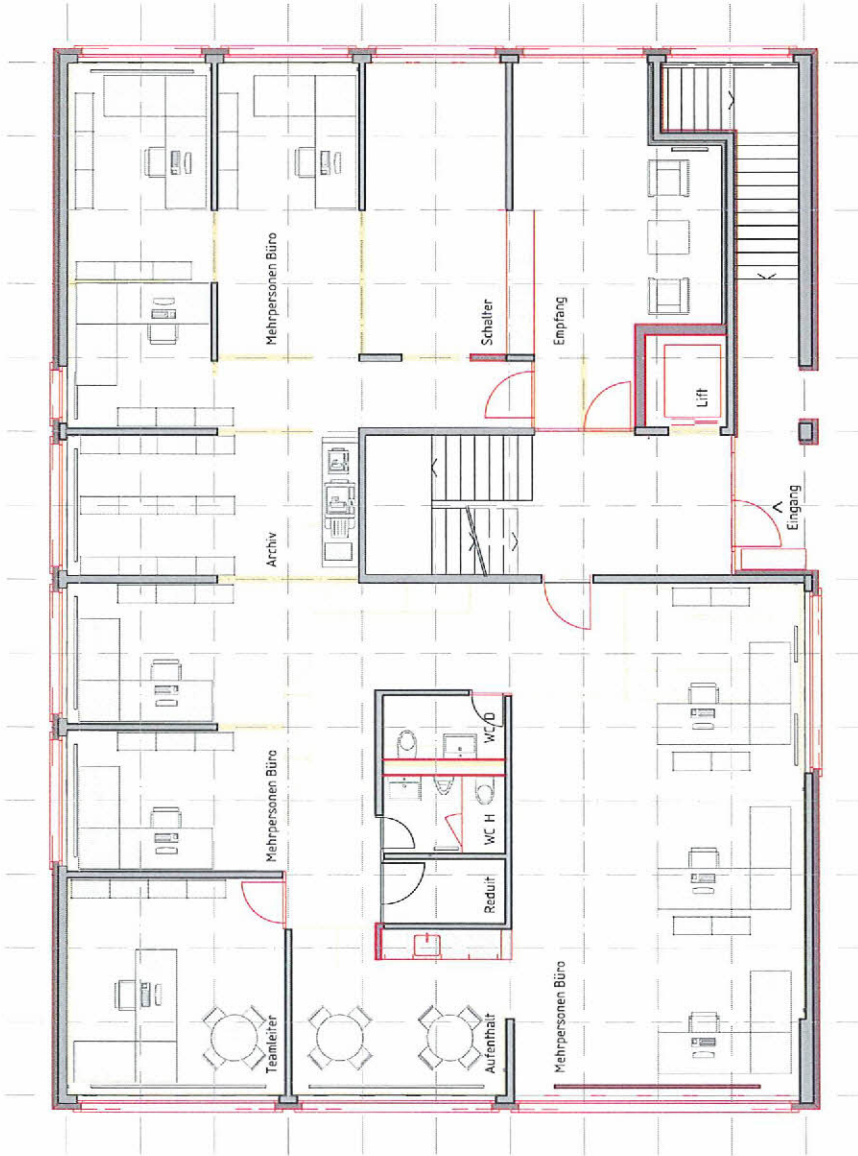
Gesuchsteller:
Grundeigentümer: Gemeinde Emmen
Rüeggisingerstrasse 22
6021 Emmenbrücke

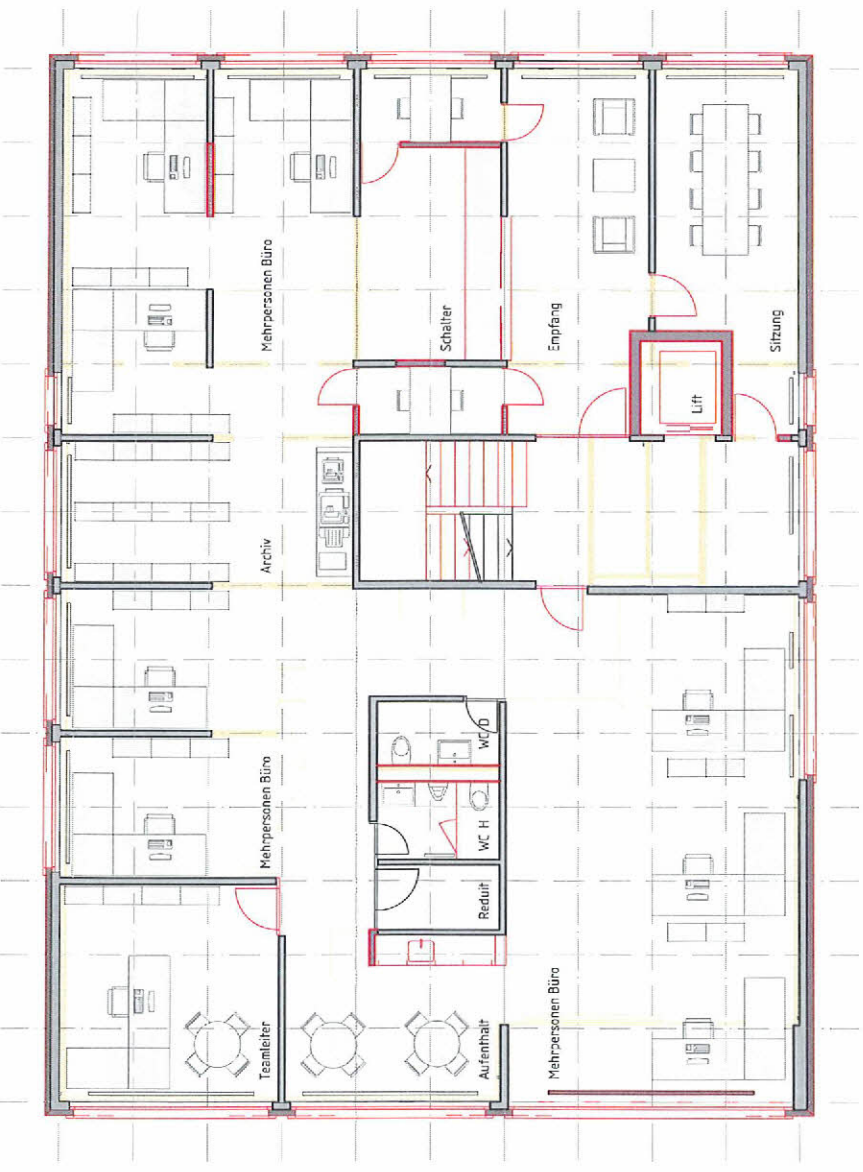
Projektverfasser:
Rogger Ambauen AG
Rolf Rogger dipl. Architekt HTL
Emmenweidstrasse 58
6020 Emmenbrücke



Mietfläche: 247m²

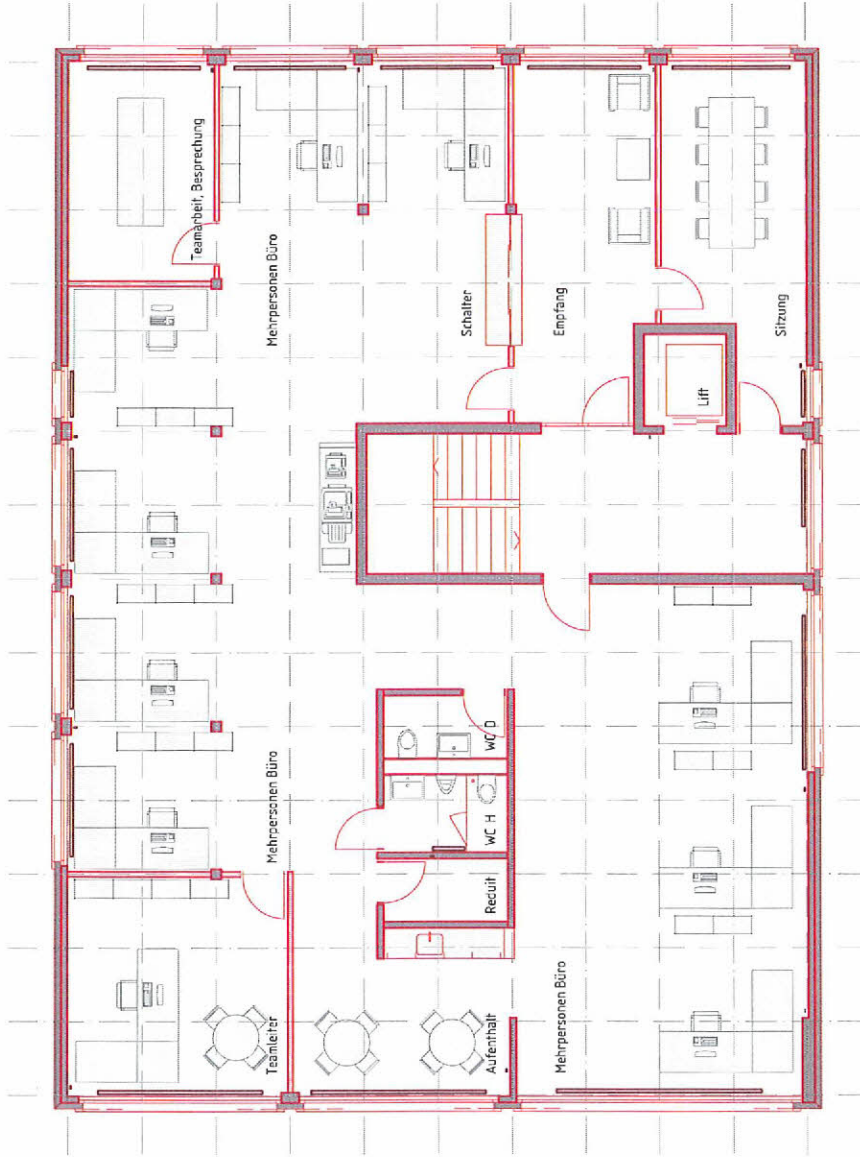
- Legende
- Neu
 - Abbruch
 - Bestehend





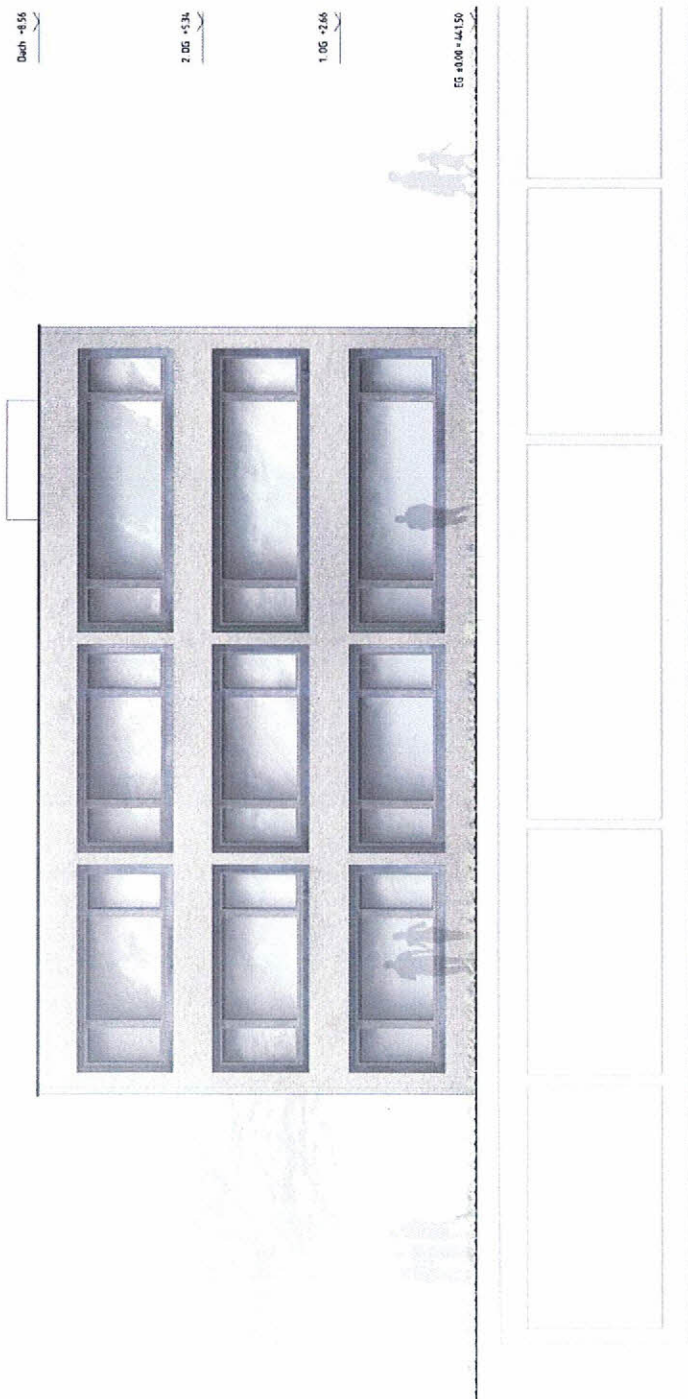
Mierfläche: 260m2

- Legende
- Neu
 - Abbruch
 - Bestehend



Erweiterung 2. OG:
Mietfläche: 260m²

- Legende
- Neu
 - Abbruch
 - Bestehend

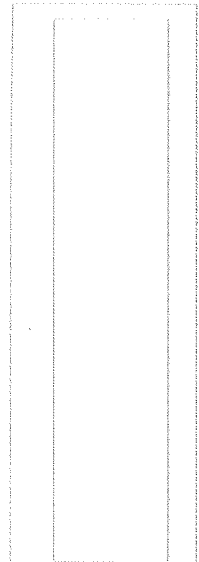
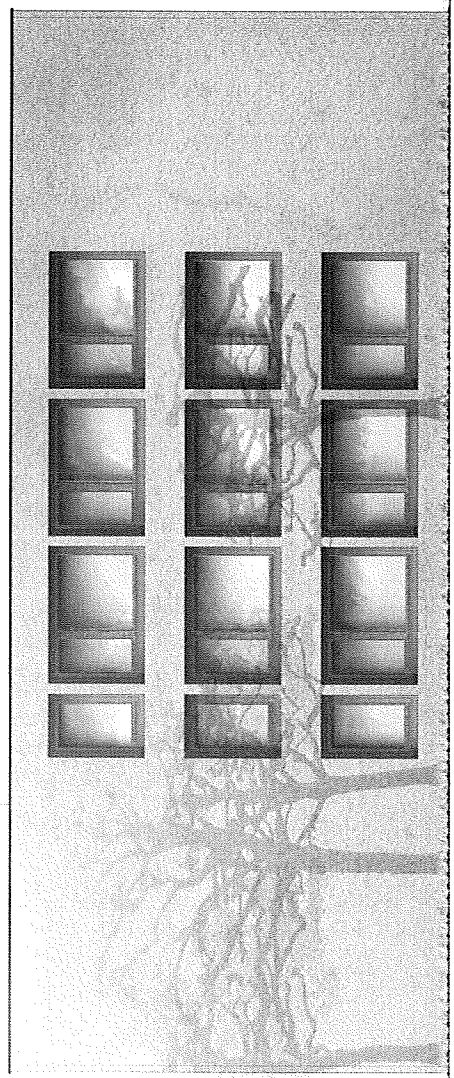


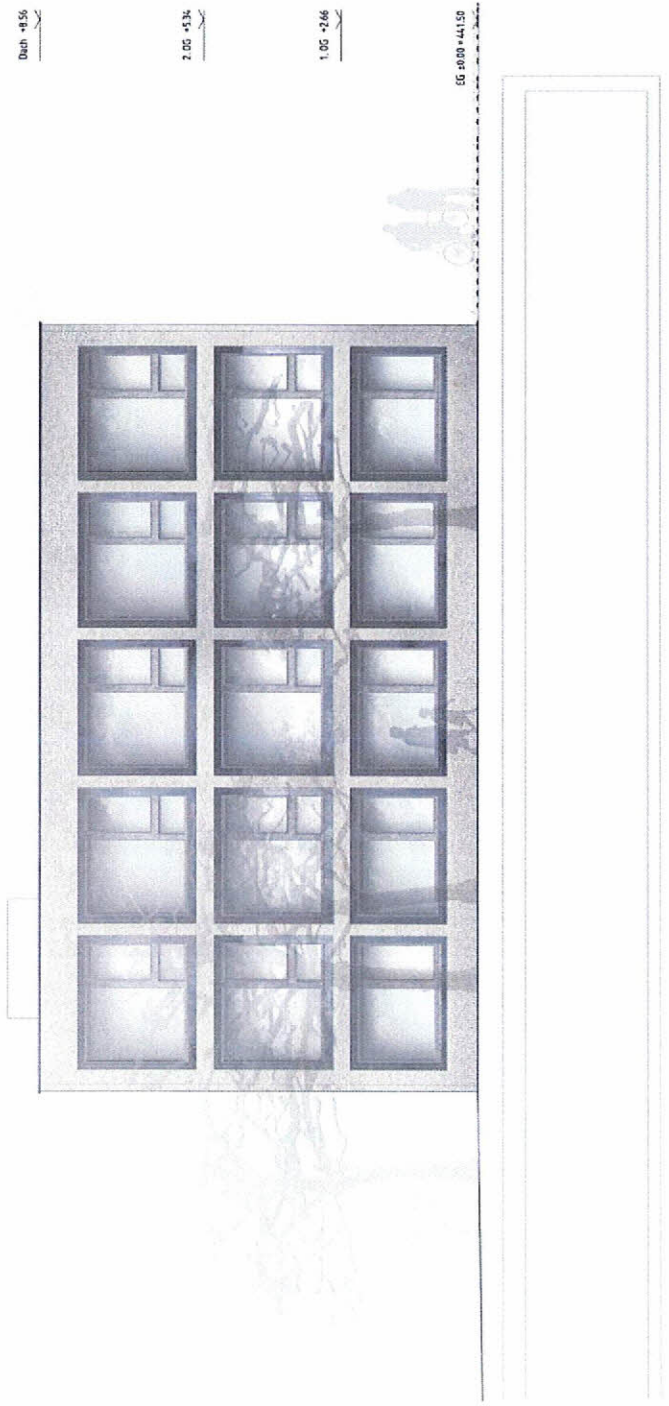
EG 0.00 - 441.90

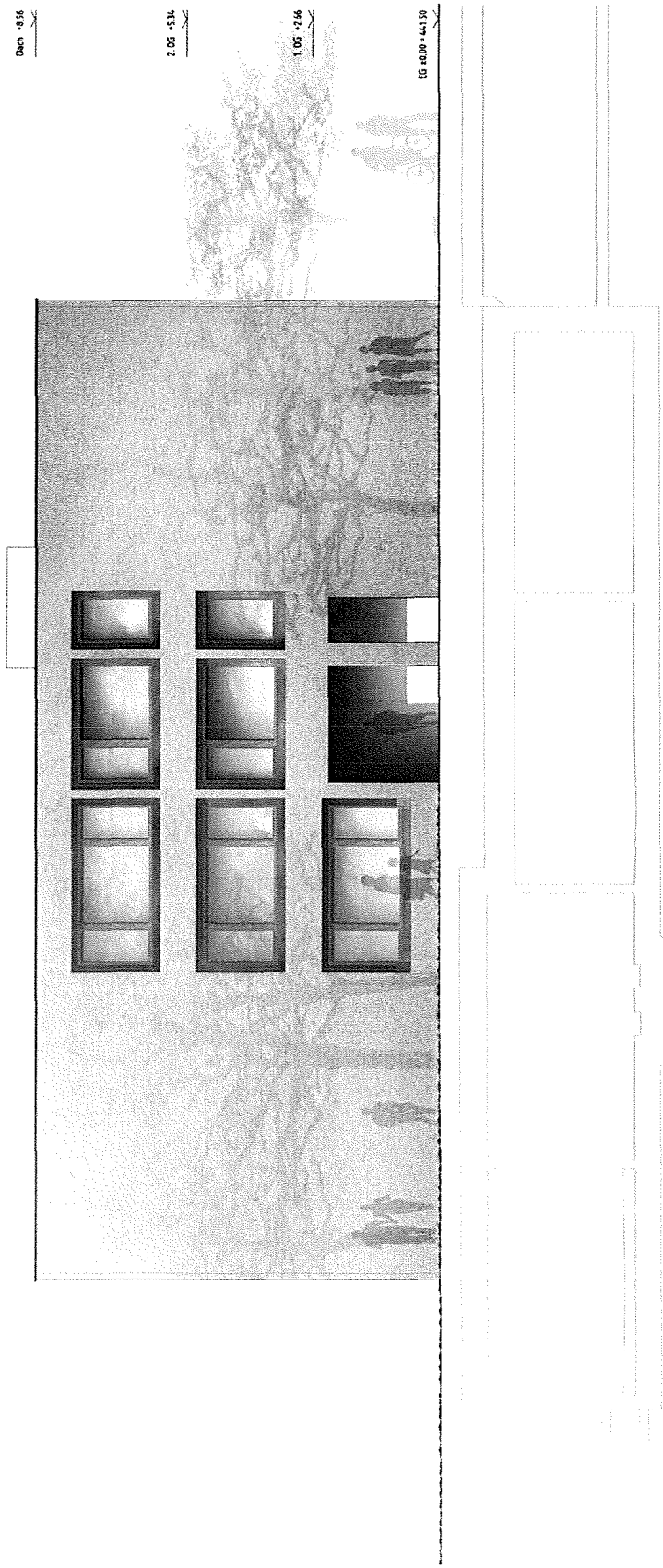
1.00 - 2.96

2.00 - 4.34

Dach - 4.56







051171-001a 03

992 - 001

993 - 002

0404 - 001